

ARBO Shield Pro®

CLASS A W1 BREATHER MEMBRANE

ARBO® Façade Solutions (ARBO FS) is the new name for a ground- breaking initiative from ARBO, one of the longest established names in UK construction materials.

ARBOShield Pro® Class A W1 Breather Membrane has a Class A2-s1, d0 reaction to fire and is a high-performance vapour permeable wall membrane with a low emissivity reflective surface.

Main Applications

ARBOShield Pro Class A W1 Breather Membrane is suitable for all light steel frame / SFS type walling applications, especially suited to high-rise and high-risk buildings such as schools, hospitals, care homes and residential blocks, helping to reduce the risk of fire spread. ARBOShield Pro Class A W1 Breather Membrane is also suitable for modular off-site construction. The unique composition of ARBOShield Pro Class A W1 Breather Membrane resists the spread of fire across the cavity of the façade. ARBOShield Pro Class A W1 Breather Membrane can be installed onto almost any substrate from sheathing boards, window frames, concrete, steel and blockwork.

For further details, contact ARBO Technical Services techservices@ccm-europe.com



Size

Roll Width	1200mm
Roll Length	35m

A part of

CARLISLE
CM EUROPE

ARBOSHIELD PRO CLASS A W1 BREATHER MEMBRANE

Fixing Instructions

Unroll ARBOShield Pro Class A W1 Breather Membrane and fix directly to the sheathing or insulation. ARBOShield Pro Class A W1 Breather Membrane should be secured to the substrate using the appropriate fixings. Fixings should be no more than 600mm horizontally and 500mm vertically.

All laps around window or door openings should be sealed using ARBOShield Pro Class A High Tack adhesive tape. Vertically, the membrane should overlap by at least 150mm and with the joints in a staggered pattern. ARBOShield Pro Class A W1 Breather Membrane should be installed with a least a 100mm lap horizontally starting at the bottom of the panel and working upwards to ensure the upper layer covers the lower layer, thus protecting the substrate from water run-off.

Fixing brackets for cladding/ wall ties should be installed as per manufacturers' instructions and care should be taken around the interface between the Breather Membrane and fixing bracket. Where cavity barriers are installed in the horizontal position ARBOShield Pro Class A W1 Breather Membrane should be lapped over the DPC tray to allow water run-off.

When using ARBOShield Pro Class A W1 Breather Membrane, as the external airtightness the Breather Membrane should be sealed using ARBOShield Pro Class A High Tack Sealing Tape.

The composition of ARBOShield Pro Class A W1 Breather Membrane provides the Breather Membrane with a high level of UV resistance and therefore a long exposure time in both summer and winter, without impacting product performance.

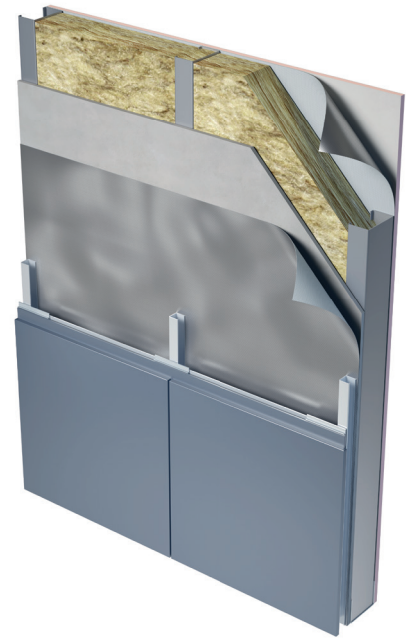
Care should be administered during installation to prevent any damage to the Breather Membrane. Small puncture areas less than 50mm can be repaired using ARBOShield Pro Class A High Tack Sealing Tape. Should the puncture or tear exceed 50mm then the repair should be made using new Breather Membrane and taping around the inserted section.

Storage

ARBOShield Pro Class A W1 Breather Membrane should be stored in cool, dry conditions in the upright position.

Health and Safety

All relevant standards should be observed on site, including manual handling and working at height.



Example SFS type façade wall construction

Associated Products

ARBOShield Pro Class A Air & Vapour Control Layer
ARBOShield Pro Class B W1 Breather Membrane
ARBOShield Pro External Perimeter Class A Membrane (EPAM)
ARBOShield Pro Class A High-Tack Sealing Tapes
ARBOProtect Pro
ARBO Intumescent and Fire-Resistant Mastics, Sealants and Foams
ARBOSeal Pro Sealing Tapes

ARBOSHIELD PRO CLASS A W1 BREATHER MEMBRANE

Technical Data			
Product	Standard	Description	Performance
ARBOShield Pro® Class A W1 Breather Membrane	EN 13501	Reaction to Fire	A2-s1,d0
	EN 13859-1	Resistance to Water Penetration	Class W1
	EN 13859-1	Tensile Strength MD	3200 N/50mm BS EN 12311-1
	EN 13859-1	Tensile Strength CD	3000 N/50mm BS EN 12311-1
	EN 13859-1	Flexibility at Low Temperature	-40 °C
	ISO 12572	Water Vapour Transmission	0.08sd
	EN 13859-1	Resistance to Nail Tearing MD	580 N BS EN 12310-1
	EN 13859-1	Resistance to Nail Tearing CD	450 N BS EN 12310-1
		Resistance to UV Exposure	5,000 hours passed* (9 months continuous)
	EN 12114	Airtightness	0.093m³/ (h x m² 50 pa)

Note

*9 months UV exposure relates to the maximum continuous exposure during the construction phase

Important: The information in this leaflet is given in good faith and based on results gained from experience and tests. However, all recommendations or suggestions are made without guarantee since the conditions of use are beyond our control. It is the user and specifier's responsibility to ensure ARBO product is suitable for the intended use: consult ARBO Technical Services for specific advice. Goods are supplied subject to the Company's terms and conditions of sales, a copy of which is available on request.



CARLISLE® Adshead Ratcliffe & Co. Ltd

United Kingdom
Derby Road | Belper

Derbyshire
DE56 1WJ

T +44 (0)1773 826661
F +44 (0)1773 821215

E info.arbo@ccm-europe.com
www.arbo.co.uk

